

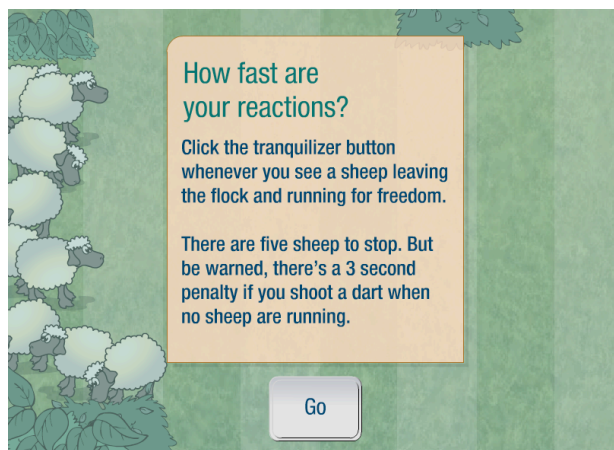
Are you a sleeping sheep or a turbo-charged cheetah?

Today, we are going to see who has a faster reaction time- you or your partner! To do so, we are going to use an online applet. The URL and instructions on how this applet works are listed below.

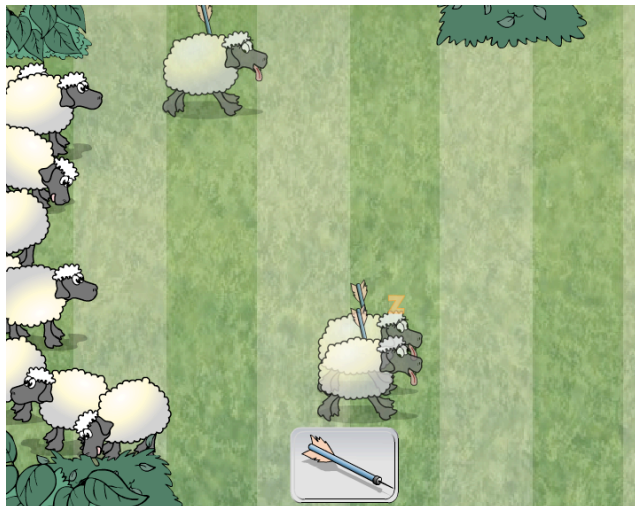
URL for sheep reaction times:

http://www.bbc.co.uk/science/humanbody/sleep/sheep/reaction_version5.swf

Screen that comes up when you first enter the website. Click on the go button to start.



Line up the mouse over the tranquillizer button to stop the sheep. You only need to click the button, not aim at the sheep.



As you are successful at hitting the sheep they stop. After five go, the activity stops and a summary of the five sheep is given along with an average for all five sheep and a description of your ability to react.

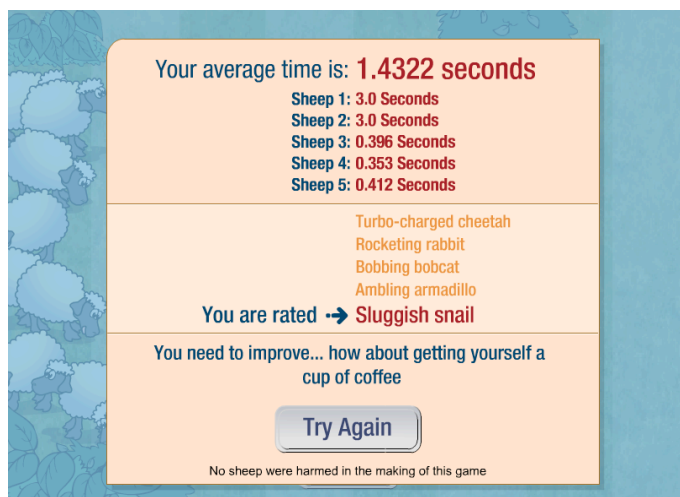
Adapted from:

Teaching and learning activities. In *New Zealand Curriculum Guides: Senior Secondary*.

Retrieved September 24, 2012, from <http://seniorsecondary.tki.org.nz/Mathematics-and-statistics/Achievement-objectives/Teaching-and-learning-activities>.



Sometimes you might jump the gun. Note that you receive a penalty of 3 seconds for “jumping the gun”. To keep going, just click continue.



Adapted from:

Teaching and learning activities. In *New Zealand Curriculum Guides: Senior Secondary*.

Retrieved September 24, 2012, from <http://seniorsecondary.tki.org.nz/Mathematics-and-statistics/Achievement-objectives/Teaching-and-learning-activities>.